

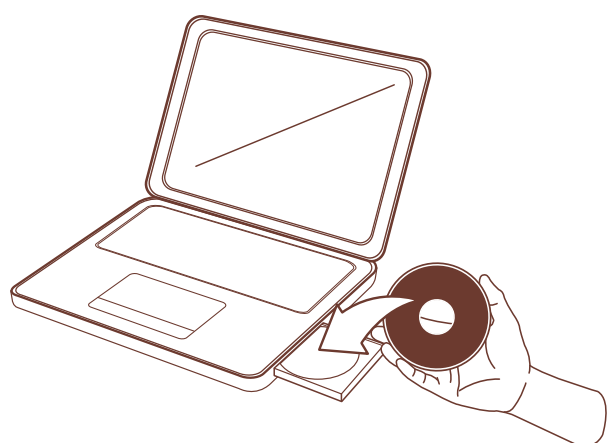
# 1 Install the hardware

UK/FR/DE/NL

🇫🇷 Installer le matériel 🇩🇪 Installieren der Hardware 🇳🇱 Installeer de Hardware



A



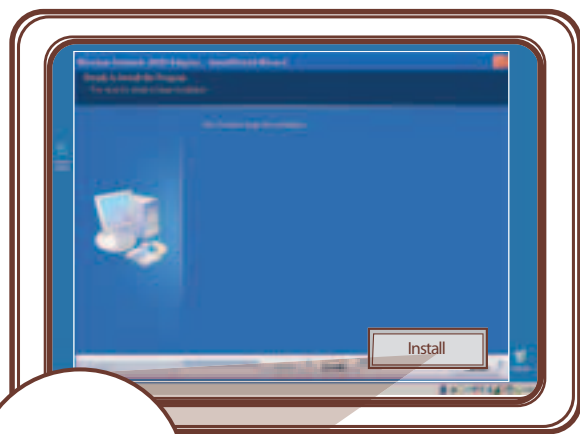
B



click

🇫🇷 cliquez sur  
🇩🇪 klick  
🇳🇱 klik

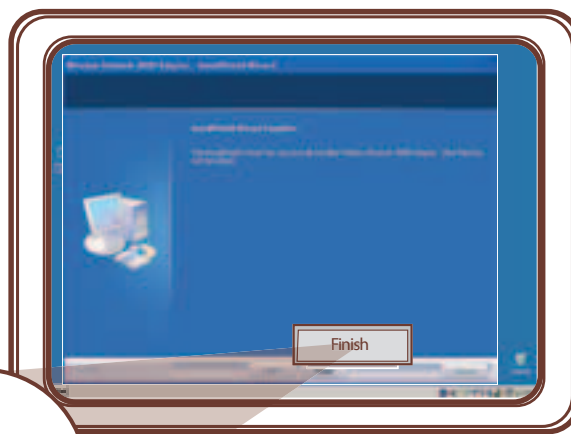
C



click

🇫🇷 cliquez sur  
🇩🇪 klick  
🇳🇱 klik

D

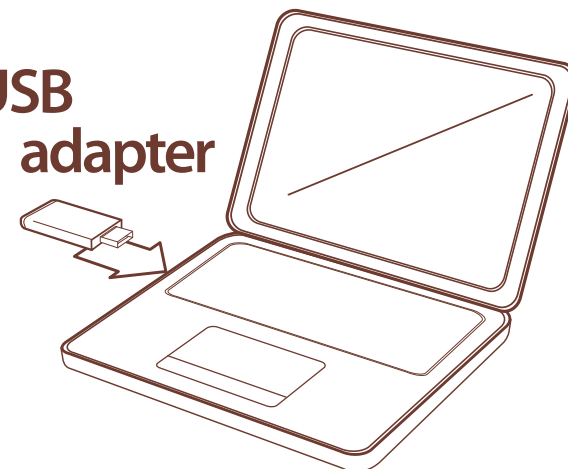


click

🇫🇷 cliquez sur  
🇩🇪 klick  
🇳🇱 klik

E

USB adapter



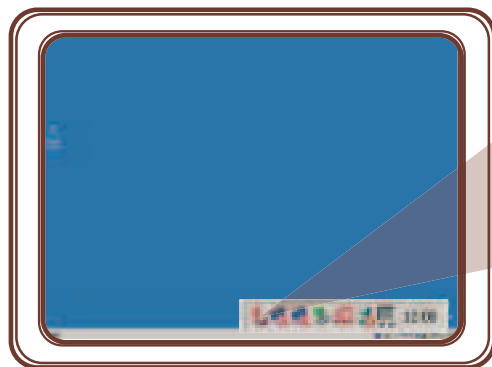
# 2 Make a connection to your network

🇫🇷 Établir une connexion à votre réseau 🇩🇪 Stellen Sie eine Verbindung zu Ihrem Netzwerk her 🇳🇱 Maak een verbinding met je netwerk

## Option 1:

- 🇫🇷 Create a wireless network
- 🇩🇪 Créé un réseau sans fil
- 🇳🇱 Erstellen Sie ein drahtloses Netzwerk
- 🇩🇪 Creëren een draadloos netwerk

A



click click

🇫🇷 double-cliquez sur  
🇩🇪 doppelklick  
🇳🇱 dubbelklikken

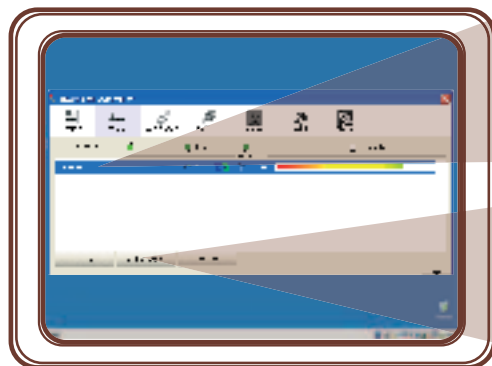
B



click on 'network'

🇫🇷 cliquez sur 'network'  
🇩🇪 klick 'network'  
🇳🇱 klik 'network'

C

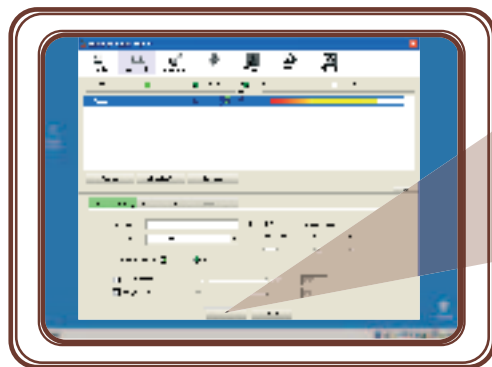


Select network

click

🇫🇷 cliquez sur 'Add to profile'  
🇩🇪 klick 'Add to profile'  
🇳🇱 klik 'Add to profile'

D



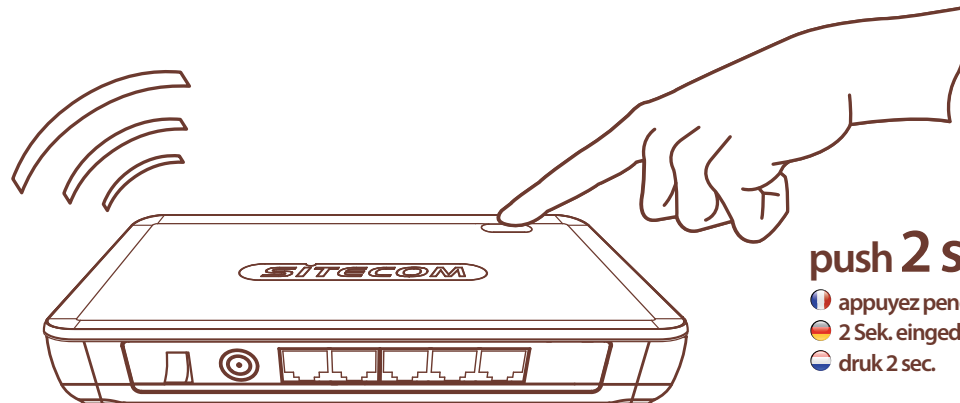
click on OK

🇫🇷 cliquez sur 'OK'  
🇩🇪 klick 'OK'  
🇳🇱 klik 'OK'

## Option 2:

- 🇫🇷 Create a wireless network with OPS security (Hardware)
- 🇩🇪 Créé un réseau sans fil à l'OPS de sécurité (Hardware)
- 🇳🇱 Erstellen Sie ein drahtloses Netzwerk mit OPS Sicherheit (Hardware)
- 🇩🇪 Creëren een draadloos netwerk met OPS beveiliging (Hardware)

A

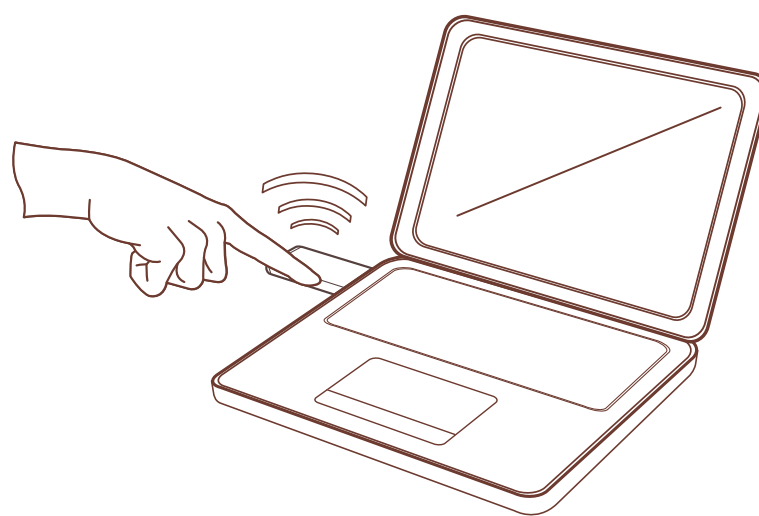


1 one push wireless setup

push 2 sec.

🇫🇷 appuyez pendant 2 sec.  
🇩🇪 2 Sek. eingedrückt halten  
🇳🇱 druk 2 sec.

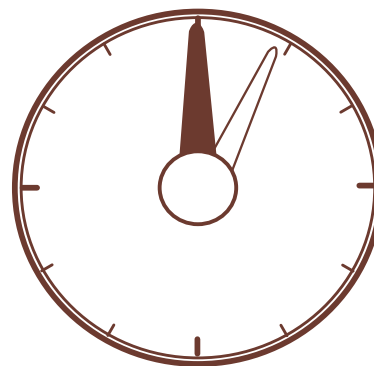
B



push 2 sec.

🇫🇷 appuyez pendant 2 sec.  
🇩🇪 2 Sek. eingedrückt halten  
🇳🇱 druk 2 sec.

C



wait 2 min.

🇫🇷 attendez 2 sec.  
🇩🇪 2 Min. warten  
🇳🇱 wacht 2 min.

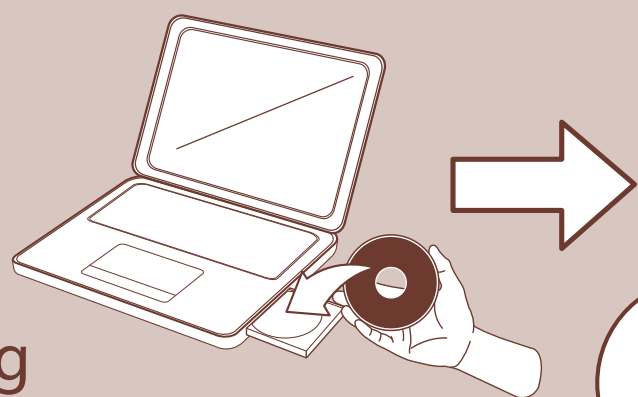
# Finish

🇫🇷 Fini  
🇩🇪 Fertig  
🇳🇱 Klaar



## Troubleshooting

🇫🇷 En cas de problème 🇩🇪 Fehlerbehebung 🇳🇱 Problemen oplossen



click

🇫🇷 cliquez sur  
🇩🇪 klick  
🇳🇱 klik

www.sitecom.com

# 1 Installare l'hardware

IT/ES/PO/RU

● Instalar el hardware ● Instalar o hardware ● Установка оборудования

wireless USB  
**adapter**  
300N

SITECOM



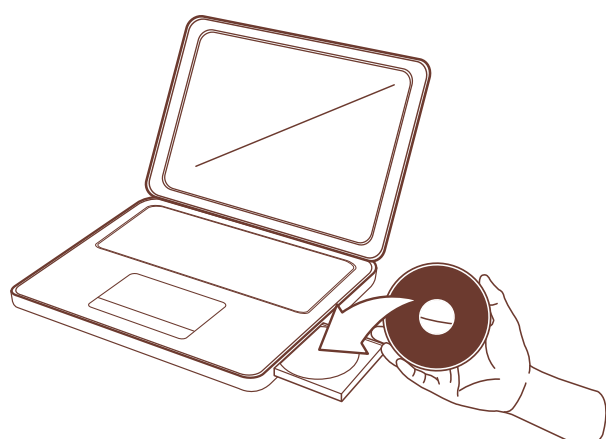
WIRELESS  
x3  
Internal High Performance  
Antenna Technology

Guida all'installazione

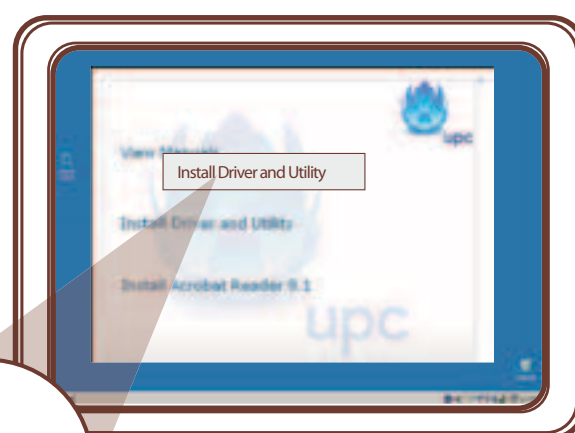
● Guía de instalación ● Guia de instalação ● Руководство по установке

WL-345

A



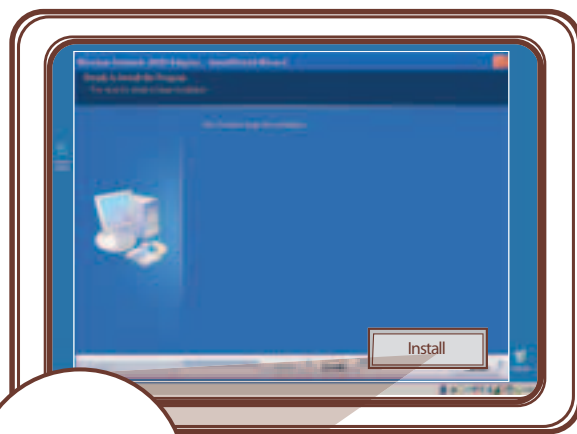
B



click

● clic  
● clique  
● нажмите

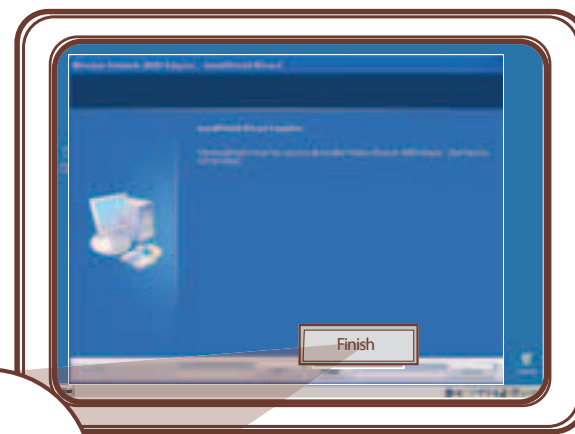
C



click

● clic  
● clique  
● нажмите

D

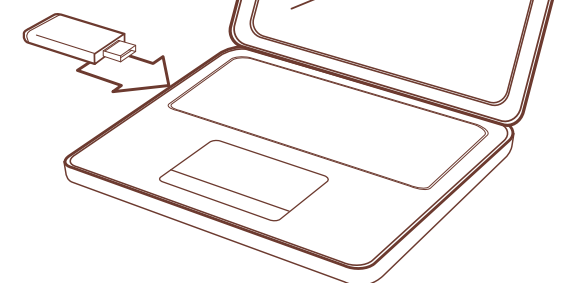


click

● clic  
● clique  
● нажмите

E

USB  
adapter



# 2 Creare una connessione con il network

● Crear una conexión con su red ● Faça uma ligação ao rede ● Установите соединений с своей сетью

Opzione 1:

- Creare una rete wireless
- Crear una red inalámbrica
- Criar uma rede sem fios
- Создать беспроводную сеть

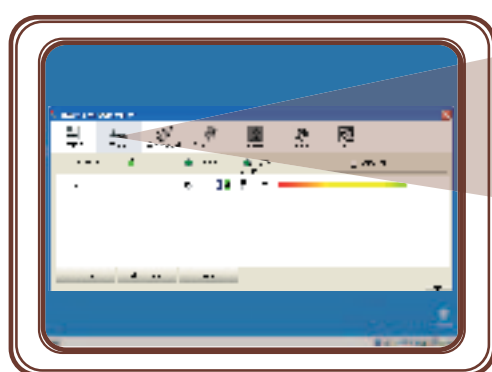
A



click  
click

● doble clic  
● duplo clique  
● дважды щелкните

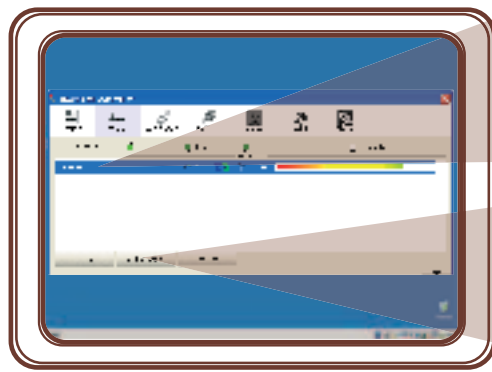
B



click  
on  
'network'

● clic 'network'  
● clique 'network'  
● нажмите 'network'

C



Select  
network

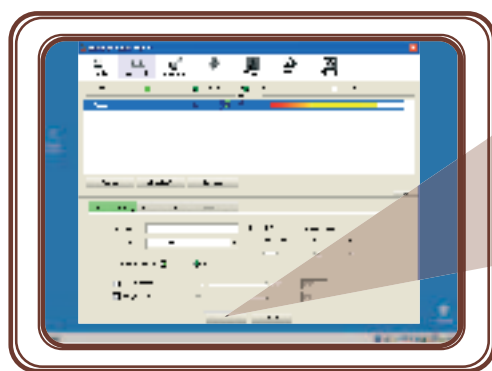
● seleccione 'network'  
● seleccione 'network'  
● Выберите 'network'

click

Add to profile

● clic 'Add to profile'  
● clique 'Add to profile'  
● нажмите 'Add to profile'

D



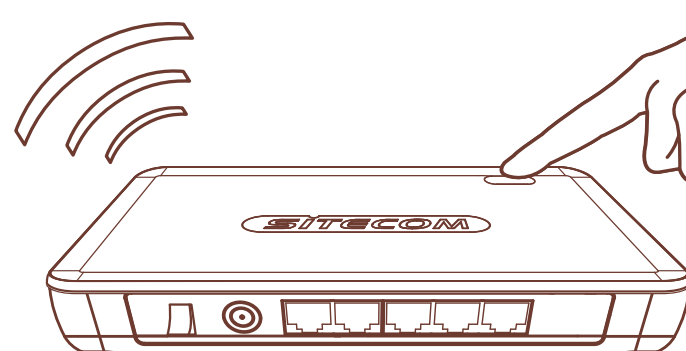
click  
on OK

● clic 'OK'  
● clique 'OK'  
● нажмите 'OK'

Opzione 2:

- Creare una rete wireless con sicurezza OPS (Hardware)
- Crear una red inalámbrica con seguridad OPS (Hardware)
- Criar uma rede sem fios com protecção OPS (Hardware)
- Создать беспроводную сеть с ОПС безопасности (Hardware)

A



1 push  
wireless setup

premere 2 sec.

● presione 2 seg.  
● prima 2 s  
● нажмите 2 секунды

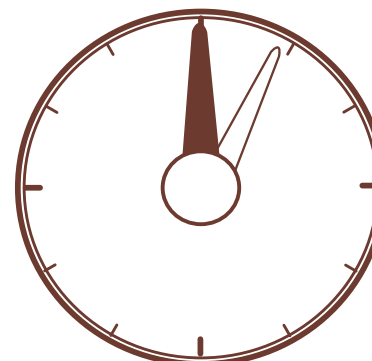
B



premere 2 sec.

● presione 2 seg.  
● prima 2 s  
● нажмите 2 секунды

C

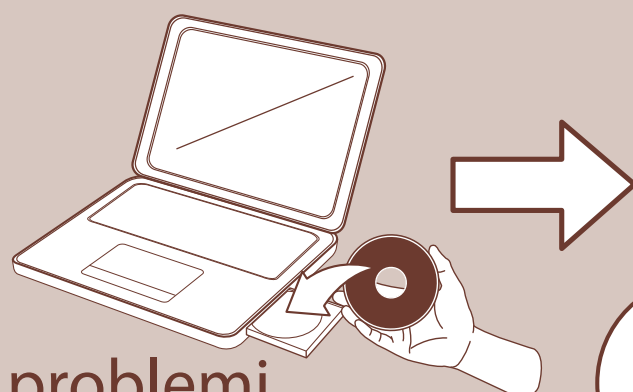


attendere 2 min.

● espere 2 min  
● aguarde 2 min.  
● подождать 2 мин

**Fine**

● Listo  
● Concluír  
● конец



click

● clic  
● clique  
● нажмите

Risoluzione dei problemi

● Resolución de problemas ● Resolução de problemas ● Устранение неполадок

www.sitecom.com